

Support the CVLT Endowment Fund Brick by Brick:

As part of the CVLT 75th Anniversary celebration, the unattractive concrete sidewalk in front of the theatre was replaced with brick pavers, many of which are reserved for engraving. The endowment will help ensure that the theatre will still be a vital part of the Chagrin Valley for another 75 years.



You have the opportunity to have your name go down in history at the Chagrin Valley Little Theatre and, at the same time, support the newly established CVLT Endowment Fund.

Remember or honor family members, special friends, recent high school or college graduates, business or organization names, actors, directors, board members, committee members and friends of the theatre. Other suggestions include a favorite play or role, a memorial, or even a catchy phrase or saying with a special meaning – *subject to refusal of inappropriate text.*

Three sizes are available:

- 4" x 8" = \$75 (tax deductible)
- 8" x 8" = \$150 (tax deductible)
- 12" x 12" = \$300 (tax deductible)

Note: A brick with a logo (or other graphic element) is available to businesses and individuals for \$500

To order, fill out the attached order form and mail to:

Chagrin Valley Little Theatre
Brick Paver Endowment Fund
40 River Street
Chagrin Falls, OH 44022

Nonprofit Org
US POSTAGE
PAID
Chagrin Falls, OH
Permit No. 01

Chagrin Valley Little Theatre
40 River Street
Chagrin Falls, Ohio 44022
www.cvlto.org



Remembering the Past,
Recognizing the Present,
Planning for the Future
Brick by Brick!

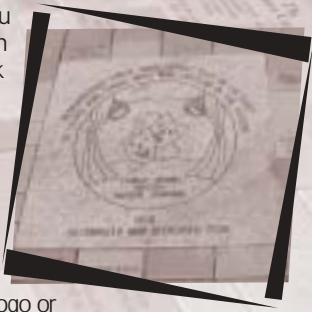


CHAGRIN VALLEY LITTLE THEATRE

Support the
CVLT Endowment Fund

Brick Paver Endowment

In front of the entry area you see the start of the Chagrin Valley Little Theatre Brick Paver Endowment Fund project. You now have the opportunity to participate in its completion.



By purchasing a brick, you can become a part of Theatre history. Businesses and individuals may add a logo or special graphics for new paver orders. These special designs sell for \$500 and will aptly represent your business, organization or individual wishes.

We have maintained the same pricing as previously announced at the beginning of the project even though it will now cost the Theatre more to install newly engraved pavers. If you wish to make an additional contribution to the CVLT Endowment Fund to offset these added costs, please check the box below.

Please tell your friends about the opportunity to place new orders. **Installation of newly engraved pavers will be in groups of 50.**

Thank you for your participation in this project which helps ensure the Theatre's future as we move full steam ahead with this beautiful addition to our rich history!

— THE BOARDS AND PEOPLE OF
CHAGRIN VALLEY LITTLE THEATRE

Yes, I want to make an added contribution to the Endowment Fund to help defray added installation costs.

_____ Amount



The Chagrin Valley Little Theatre

For further information call 440-247-8955
(1-6pm Mon.-Sat.) or visit www.cvlts.org.

JUNE 2007

MAIL FORM TO: CHAGRIN VALLEY LITTLE THEATRE, BRICK PAVER ENDOWMENT FUND
40 RIVER STREET, CHAGRIN FALLS, OH 44022

Order Form

Please fill out in its entirety so that your order can be 100% confirmed before engraving. Make checks payable to Chagrin Valley Little Theatre.

NAME _____

PAYMENT: CHECK ENCLOSED VISA MASTERCARD

ADDRESS _____

NAME ON CARD _____

CITY/STATE/ZIP _____

CARD # _____ EXP. DATE _____

PHONE _____ EMAIL _____

SIGNATURE _____

\$75 Contribution (tax deductible) _____



A 4" x 8" brick engraved with up to 3 lines of 15 characters each (spaces between words count).
Print clearly in upper case letters exactly how you would like engraving to appear on your brick.

4" x 8"

_____|_____|_____|_____|_____|_____|_____|_____|_____|_____|_____|_____|_____|_____|_____|
_____|_____|_____|_____|_____|_____|_____|_____|_____|_____|_____|_____|_____|_____|_____|
_____|_____|_____|_____|_____|_____|_____|_____|_____|_____|_____|_____|_____|_____|_____|

\$150 Contribution (tax deductible) _____

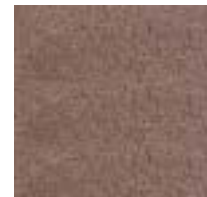


A 8" x 8" brick engraved with up to 5 lines of 15 characters each (spaces between words count).
Print clearly in upper case letters exactly how you would like engraving to appear on your brick.

8" x 8"

_____|_____|_____|_____|_____|_____|_____|_____|_____|_____|_____|_____|_____|_____|_____|
_____|_____|_____|_____|_____|_____|_____|_____|_____|_____|_____|_____|_____|_____|_____|
_____|_____|_____|_____|_____|_____|_____|_____|_____|_____|_____|_____|_____|_____|_____|
_____|_____|_____|_____|_____|_____|_____|_____|_____|_____|_____|_____|_____|_____|_____|
_____|_____|_____|_____|_____|_____|_____|_____|_____|_____|_____|_____|_____|_____|_____|

\$300 Contribution (tax deductible) _____



A 12" x 12" brick engraved with up to 9 lines of 20 characters each (spaces between words count).
Print clearly in upper case letters exactly how you would like engraving to appear on your brick.

12" x 12"

_____|_____|_____|_____|_____|_____|_____|_____|_____|_____|_____|_____|_____|_____|_____|
_____|_____|_____|_____|_____|_____|_____|_____|_____|_____|_____|_____|_____|_____|_____|
_____|_____|_____|_____|_____|_____|_____|_____|_____|_____|_____|_____|_____|_____|_____|
_____|_____|_____|_____|_____|_____|_____|_____|_____|_____|_____|_____|_____|_____|_____|
_____|_____|_____|_____|_____|_____|_____|_____|_____|_____|_____|_____|_____|_____|_____|
_____|_____|_____|_____|_____|_____|_____|_____|_____|_____|_____|_____|_____|_____|_____|
_____|_____|_____|_____|_____|_____|_____|_____|_____|_____|_____|_____|_____|_____|_____|
_____|_____|_____|_____|_____|_____|_____|_____|_____|_____|_____|_____|_____|_____|_____|
_____|_____|_____|_____|_____|_____|_____|_____|_____|_____|_____|_____|_____|_____|_____|

New: A brick with a logo (or other graphic element) is available to businesses and individuals for \$500

